

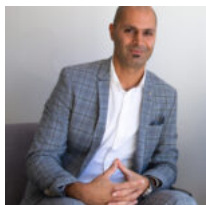


## **SOLD!! 32 CROMMELIN CRESCENT, ST HELENS PARK**

<https://spmre.net>

Renovated over time and presenting as nice as the pictures, this home offers plenty of space and rooms to occupy. From the 3 bedrooms to the large rumpus/ playroom, open study area and separate lounge and dining. The main bathroom features a beautiful freestanding bathtub, a separate toilet and a second toilet in the modern [...]

- 3 beds
- 2 baths
- Houses
- SOLD
- Sold
- 91 m<sup>2</sup>



**Elee Boustani**

[info@sydneypropertymanager.net](mailto:info@sydneypropertymanager.net)

---

## **Floor Plans**



### **Call us now**

Phone: 02 8632 3026

Email: [info@sydneypropertymanager.net](mailto:info@sydneypropertymanager.net)

Address: Unit 7a/36 Holbeche Rd, Arndell Park NSW 2148





---

## Amenities & Features

**Amenities:** Dishwasher

**Features:** Air conditioning



### Call us now

Phone: 02 8632 3026

Email: [info@sydneypropertymanager.net](mailto:info@sydneypropertymanager.net)

Address: Unit 7a/36 Holbeche Rd, Arndell Park NSW 2148

